

OxMetrics 7.2 Installation Notes

Contents

1	OxMetrics 7 Platforms	1
2	Windows 10, 8, Windows 7, Vista, Windows XP	3
3	Windows 10,8 64-bit, Windows 7 64-bit, Vista 64-bit, Windows XP x64	5
4	OS X 10.12 — 10.6	7
5	Linux 64-bit	9
6	Linux 32-bit	11
7	Persistent settings	12
	7.1 Windows	12
	7.2 OS X	12
	7.3 Linux	12

1 OxMetrics 7 Platforms

OxMetrics 7 is supported on the following five platforms:

- **Windows 10, 8, Windows 7, Vista, Windows XP**
- **Windows 10, 8 64-bit, Windows 7 64-bit, Vista 64-bit, Windows XP x64**
- **OS X 10.12 (Sierra) – 10.6 (Snow Leopard)**
Only for Intel-based Apple Mac. All Ox binaries are 32 and 64-bit; all binaries that present a user interface are 32-bit only.
- **Linux 32-bit**
On Intel and AMD (i386, i686) processors.
- **Linux 64-bit**
On Intel and AMD (x86_64) 64-bit processors.

All platform installers are on a single DVD:

1. **Windows:** Autorun starts `install.exe` from the root folder; this will launch the 32-bit installers that are in the root folder.
2. **64-bit Windows:** Autorun starts `install_64.exe` from the root folder; this will launch the 64-bit installers that are in the 64bit folder.
3. **OS X:** installer files (`.pkg`) are in the `OSX` folder.
4. **linux:** installer files (`.rpm` and `.deb`) are in the `linux` folder.

The full OxMetrics system consists of

1. **OxMetrics front-end**
2. **OxMetrics components:** Ox Professional, PcGive, G@RCH, STAMP
3. **OxEdit:** optional free editor which is the main front-end for Ox Console.

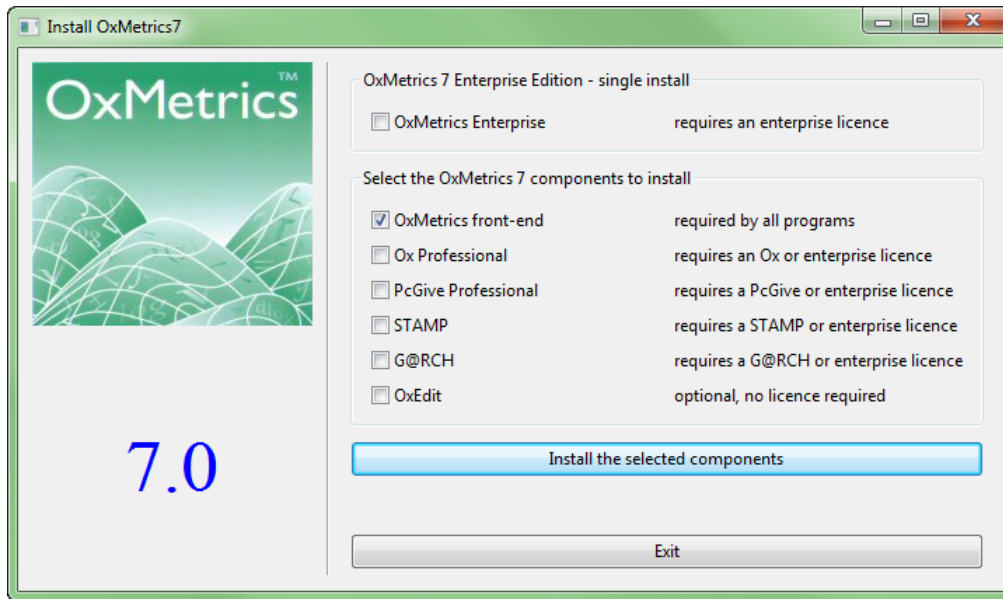
Individual licences are available for the four OxMetrics components, or one enterprise licence covering all four.

A separate installation CD covers TSP/OxMetrics

2 Windows 10, 8, Windows 7, Vista, Windows XP

Installation

Insert the DVD. If Autorun is on, the installation program is started automatically. Otherwise start `install.exe` from the root folder of the DVD. You may first get the user access control dialog asking you to allow the program to make changes, say yes, after which the installation dialog appears:



and select the relevant options. OxMetrics Enterprise has one integrated installer only, so select that option when you have an Enterprise licence. Note that all installations (except OxEdit) will ask for a valid licensing code.

By default, installation is to `C:\Program Files\OxMetrics7` (or your language-specific location for program files). You may choose another location for the `OxMetrics7` folder, but the same should be used for all components.

Registering OxMetrics

If you install OxMetrics normally, it will already be registered with the licence code used during installation, and you can start working immediately.

An unregistered version will show the registration dialog on screen. Enter the licensing code and your name in the respective fields (you must enter the code provided by your distributor).

An *OxMetrics Enterprise* licensing code enables most modules. Otherwise, many modules have their own additional licence code, which can be entered in the dialog. Once OxMetrics has the first registration code, the registration dialog will not appear automatically anymore. To enter additional codes, activate the Help/Registration menu.

Running OxMetrics

An OxMetrics7 folder will be added to All Programs on the Start menu. This will have a shortcut to OxMetrics7, which is the primary way to run all OxMetrics programs. A shortcut to OxMetrics7 is also added on the desktop.

OxMetrics folder structure

The OxMetrics folder structure is as follows:

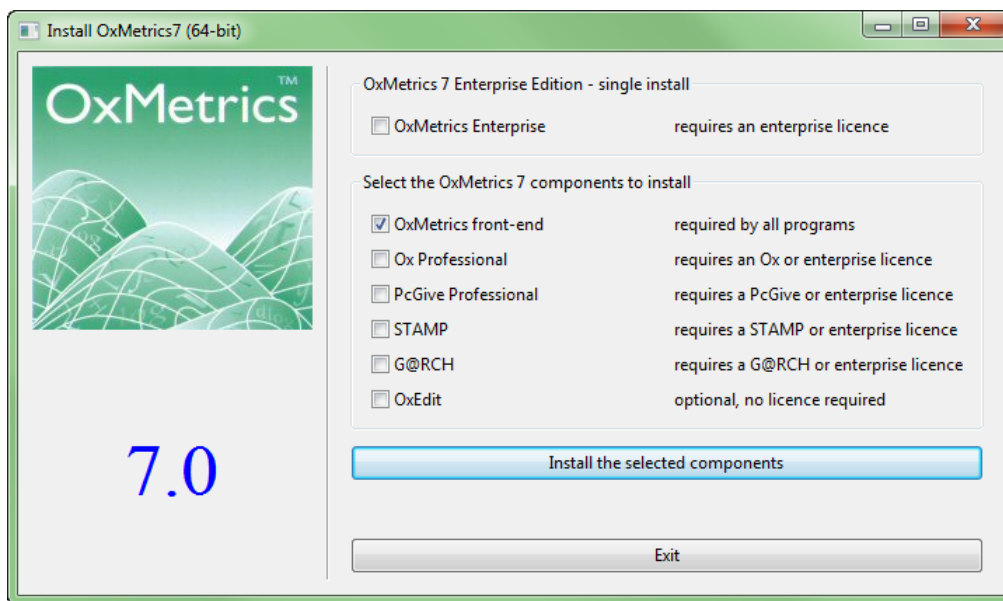
```
\Program Files\                (default)
  OxMetrics7\
    algebra\                    Algebra files
    bin\                        binary and related files
    batch\                      Batch files
    data\                      Data files
    doc\                        Help system
    ox\                          Root of Ox installation
      bin\                      binary files for Ox
      doc\                      help files for Ox
      include\                 Ox header files for Ox code
      packages\               Ox packages
      samples\                Ox sample code
      ...
    OxEdit\
      bin\                    OxEdit files
      ...
```

3 Windows 10,8 64-bit, Windows 7 64-bit, Vista 64-bit, Windows XP x64

Installation

All 64-bit Windows components are in the 64bit folder of the DVD.

Insert the DVD. If Autorun is on, the installation program is started automatically. Otherwise start `install_64bit.exe` from the root folder of the DVD. You may first get the user access control dialog asking you to allow the program to make changes, say yes, after which the installation dialog appears:



and select the relevant options. OxMetrics Enterprise has one integrated installer only, so select that option when you have an Enterprise licence. Note that all installations (except OxEdit) will ask for a valid licensing code.

By default, installation is to `C:\Program Files\OxMetrics7` (or your language-specific location for program files). You may choose another location for the `OxMetrics7` folder, but the same should be used for all components.

Registering and running OxMetrics

As for 32-bit Windows, see above.

OxMetrics folder structure

The OxMetrics folder structure is as follows:

```

\Program Files\                (default)
  OxMetrics7\
    algebra\                   Algebra files
    
```

bin64\	binary and related files
batch\	Batch files
data\	Data files
doc\	Help system
ox\	Root of Ox installation
bin64\	binary files for Ox
doc\	help files for Ox
include\	Ox header files for Ox code
packages\	Ox packages
samples\	Ox sample code
...	
OxEdit\	
bin64\	OxEdit files
...	

4 OS X 10.12 — 10.6

Installation

To install G@RCH, PcGive and/or STAMP, double-click on `OSX/oxmetrics720.pkg.zip` from the DVD. The zip file will be unarchived, and shown selected as `oxmetrics720.pkg` in the Downloads folder. Double-click on `oxmetrics720.pkg` to see:



and follow the installation instructions, entering the licensing code when prompted. This will also install the OxMetrics front-end. Note that the PowerPC architecture is no longer supported.

To install Ox Professional, use `OSX/oxpro720.pro.zip` from the DVD. This will also install the OxMetrics front-end.

Registering OxMetrics

If you install OxMetrics normally, you will already have registered it during installation, and you can start working immediately. A licence code entered during installation is available to all users of the computer (which would require a multiple-user licence). To add more shared licences, rerun the installer.

An unregistered version of OxMetrics will show the registration dialog on screen, as displayed above. Note that a licensing code entered when running the program as the current user is only available to that user. Enter the licensing code and your name in the respective fields (you must enter the code provided by your distributor).

An *OxMetrics Enterprise* licensing code enables most modules. Otherwise, many modules have their own additional licence code, which can be entered in the registration dialog. Once OxMetrics has the first registration code, the above dialog will not appear automatically anymore. To enter additional codes, activate the Help/Registration menu (current user only), or rerun the installer package (shared licence).

Running OxMetrics

An OxMetrics7 folder will be added to Applications. Inside this folder you will find the OxMetrics and (if Ox is installed) OxEdit programs. Double click on these to run, or drag them to the Dock for convenience.

OxMetrics folder structure

The OxMetrics folder structure is as follows:

```

/Applications/
  OxMetrics7/
    OxMetrics           the OxMetrics program
    OxEdit              the OxEdit program
    algebra/           Algebra files
    bin/                further binary and related files
    batch/              Batch files
    data/               Data files
    doc/                Help system
    ox/                 Root of Ox installation
      bin/              binary files for Ox
      doc/              help files for Ox
      include/          Ox header files for Ox code
      packages/         Ox packages
      samples/          Ox sample code
      ...
    ...
  
```


5 Linux 64-bit

Installation openSUSE, Fedora, Red Hat, CentOS, etc.

This section is for linux distributions that use RPM packages for installation.

To install G@RCH, PcGive and/or STAMP, use the RPM package `oxmetrics-7.20-0.x86_64.rpm` from the `linux/64bit` folder on the DVD. This will also install the OxMetrics front-end.

RPM requires root access, so open a terminal window, and run the following command either using `sudo`, or as superuser (`su`) to install (using the correct path to the rpm file if necessary):

```
sudo rpm -ivh oxmetrics-7.20-0.x86_64.rpm
```

Also install Ox, if you have an Ox or Enterprise licence:

```
sudo rpm -ivh oxpro-7.20-0.x86_64.rpm
```

To rerun the installation when it is already installed add `--force`; to upgrade use `-Uvh` (but note that this removes the old version).

Installation Debian, Ubuntu, Mint, etc.

Linux distributions that are based on Debian use debian packages for installation (`.deb`). The supplied debian packages have been converted using `alien -c -k`. If the debian equivalent of an rpm package is missing, it can be converted with the same command.

Issue the following command in a terminal window (using the correct path to the deb file if necessary) to install the OxMetrics front-end and G@RCH, PcGive and/or STAMP:

```
sudo dpkg -i oxmetrics_7.20-0_amd64.deb
```

To install Ox Professional, use `oxpro_7.20-0_amd.deb` from the DVD. This will install Ox Professional with OxEdit:

```
sudo dpkg -i oxpro_7.20-0_amd.deb
```

An existing installation can be overwritten by using the `--force-overwrite` switch of `dpkg`.

Registering OxMetrics

Installation of OxMetrics does not automatically prompt for a licensing code (unlike Windows or OS X) because this is against the RPM guidelines. When running OxMetrics for the first time, it will be unregistered and show the registration dialog on screen, as displayed above. Enter the licensing code and your name in the respective fields (you must enter the code provided by your distributor).

You can enter your code this way, but note that it will only be available to the current user. That should be sufficient if you have a single licence. A multi-user licence may need to be shared and requires the registration to be run as superuser. Do do this, run the `/usr/share/OxMetrics7/register` script from a terminal as superuser.

An *OxMetrics Enterprise* licensing code enables most modules. Otherwise, many modules have their own additional licence code, which can be entered in the dialog. Once OxMetrics has the first

registration code, the above dialog will not appear automatically anymore. To enter additional codes, activate the Help/Registration menu, or rerun the register script as superuser.

Running OxMetrics

An OxMetrics and (if Ox is installed) OxEdit short-cut is added under Education as well as Development. Select these to run the programs. First time, it seems necessary to run OxMetrics once, then restart it, to get the client modules to work. The command line script for running ox is /usr/bin/oxl64.

OxMetrics folder structure

The OxMetrics folder structure is as follows:

```

/usr/share/
  OxMetrics7/
    algebra/           Algebra files
    bin64/             binary and related files
    batch/             Batch files
    data/              Data files
    doc/               Help system
    ox/                Root of Ox installation
      bin64/           binary files for Ox
      include/         Ox header files for Ox code
      packages/        Ox packages
      samples/         Ox sample code
      ...
    OxEdit/
      bin64/           OxEdit files
      ...
  applications        desktop files
/usr/bin/oxl64        link to /usr/share/OxMetrics7/ox/bin64/oxl

```

6 Linux 32-bit

Installation

The installation procedure is the same as for 64-bit Linux, but now using the `linux/32bit` folder on the DVD. There are no `.deb` files for Debian-derived distributions. These must be created using `alien` instead.

Registering OxMetrics

As for 64-bit Linux, see above.

Running OxMetrics

An OxMetrics and (if Ox is installed) OxEdit short-cut is added under Education as well as Development. Select these to run the programs. First time, it seems necessary to run OxMetrics once, then restart it, to get the client modules to work. The command line script for running ox is `/usr/bin/oxl`.

OxMetrics folder structure

The OxMetrics folder structure is as follows:

```

/usr/share/
  OxMetrics7/
    algebra/           Algebra files
    bin/               binary and related files
    batch/            Batch files
    data/             Data files
    doc/              Help system
    ox/               Root of Ox installation
      bin/            binary files for Ox
      doc/           help files for Ox
      include/       Ox header files for Ox code
      packages/     Ox packages
      samples/      Ox sample code
      ...
    OxEdit/
      bin/           OxEdit files
      ...
  applications       desktop files
/usr/bin/oxl         link to /usr/share/OxMetrics7/ox/bin/oxl

```

7 Persistent settings

7.1 Windows

OxMetrics and its client modules store their setup and persistent data in the registry. The primary key is HKEY_CURRENT_USERS\Software\OxMetrics7. In addition, some file associations are created for the OxMetrics file types.

If necessary, the persistent settings can be recreated by typing the following in a Command Prompt (Console) window with Administrator privileges:

```
oxmetrics.exe -register  
oxmodel.exe -register
```

Then do the same for OxPack and OxRun if Ox Professional has been installed (in the ox\bin folder).

7.2 OS X

OxMetrics and its client modules store their setup and persistent data in preference files, stored in ~/Library/Preferences. File associations are not yet supported.

7.3 Linux

OxMetrics and its client modules store their setup and persistent data in configuration files, stored in the user's root folder. File associations are not yet supported.